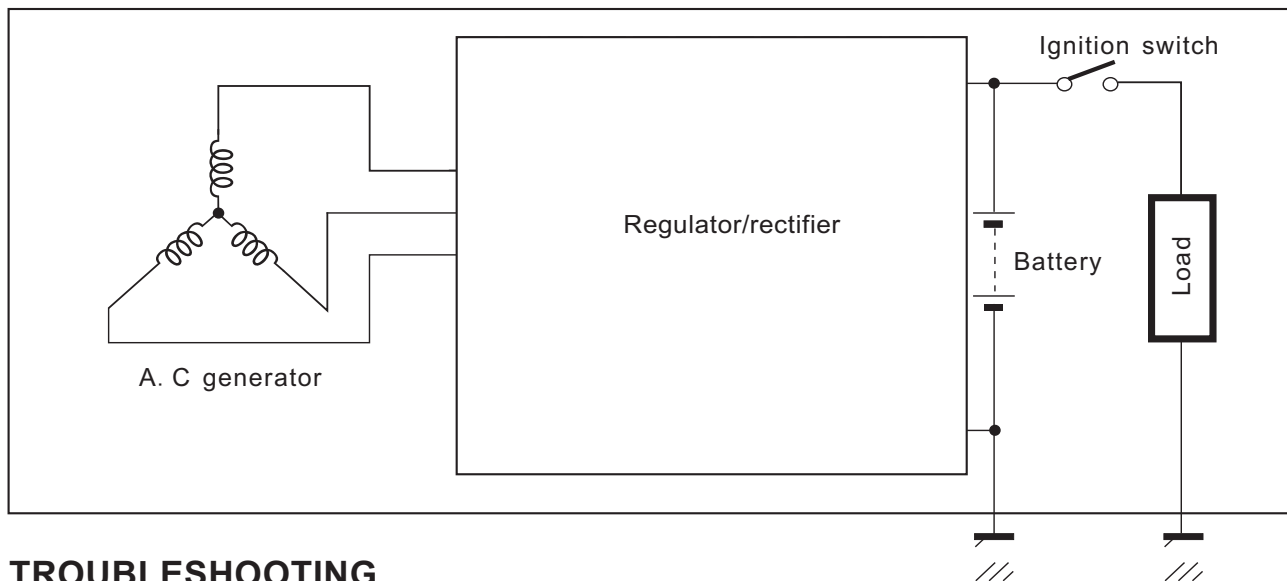


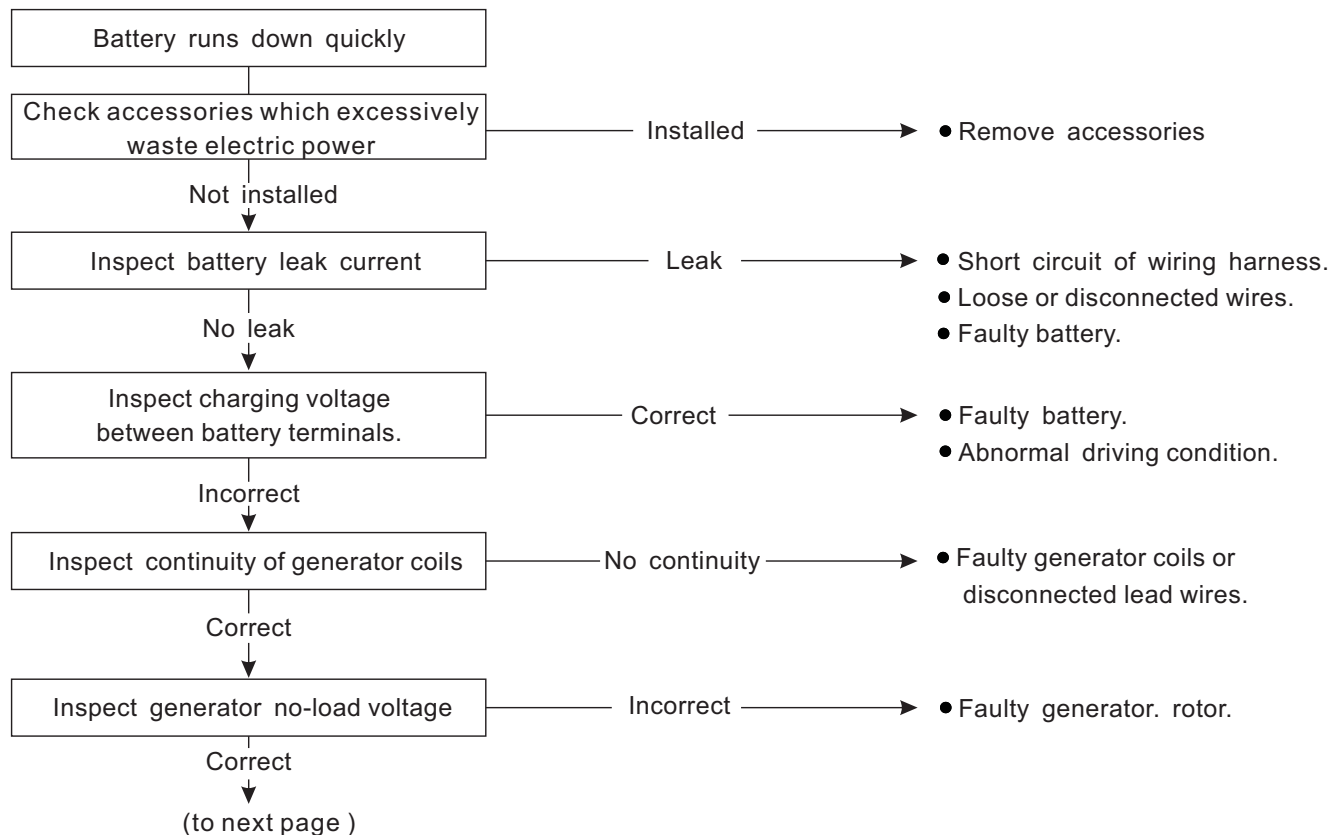
CHARGING SYSTEM DESCRIPTION

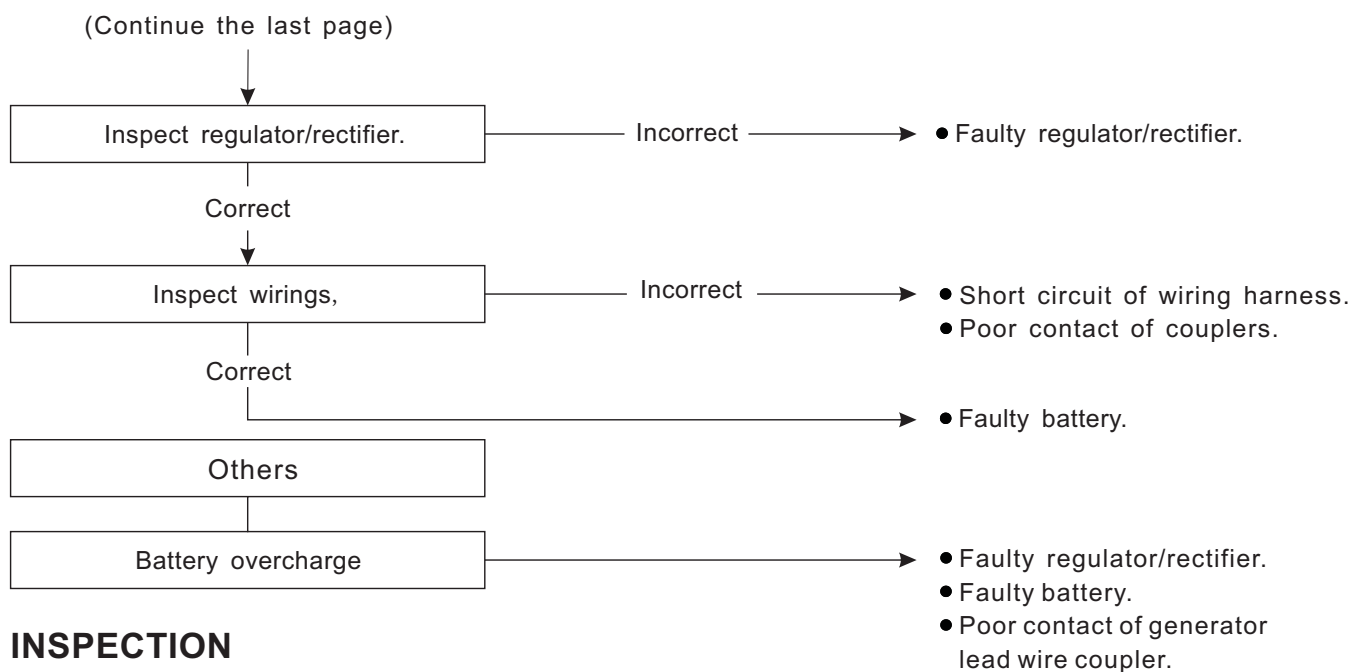
The circuit of the charging system is indicated in the figure, which is composed of an AC generator, regulator/rectifier unit and battery.

The AC current generated from AC generator is converted by rectifier and is turned into DC current, then is charges the battery.



TROUBLESHOOTING





INSPECTION

BATTERY LEAK CURRENT INSPECTION

- Remove the left side cover .
- Turn the ignition switch to the OFF position.
- Disconnect the battery lead wire.
- Measure voltage between the battery - terminal and the specified ground cable terminal. If the reading exceeds the specified value, then leakage is present.

TOOL 09900-25008: Pocket tester

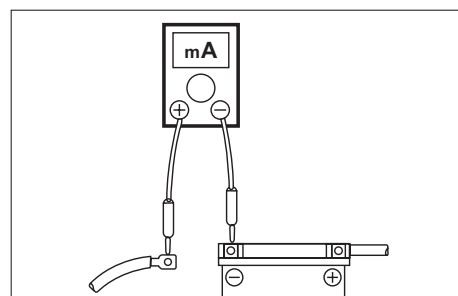
DATA Battery leakage: Less than 10 μ A

Tester knob indication: (- ----, 200 μ A)

CAUTION

Because the leak current might be large, turn the tester to high range first when connecting an ammeter.

Do not turn the ignition switch to the ON position when measuring current.



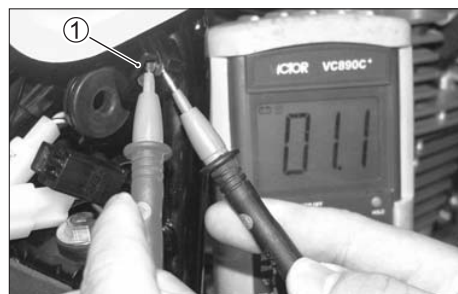
GENERATOR COIL INSPECTION

- Remove the right side cover.
- Disconnect generator coupler ①.
- Measure the resistance between the lead wires, if the resistance is incorrect, replace the generator coil.

TOOL 09900-25008: Pocket tester

Tester knob indication: Resistance

DATA Generator coil resistance: 0.9 Ω (Y-Y)



CHARGING OUTPUT INSPECTION

- Remove the left side cover.
- Start the engine, keep it running at 5 000 r/min, with lighting switch turned ON and dimmer switch turned HI position.
- Measure the DC voltage between the battery terminal and with a pocket tester. If the tester reads under the specified value, inspect the generator coil and regulator/rectifier.

⚠ CAUTION

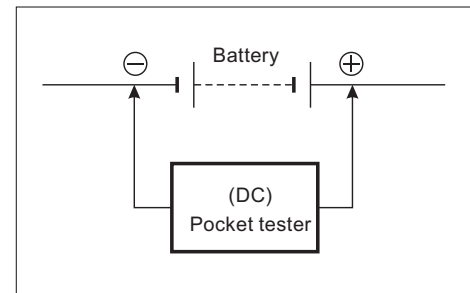
When making this test, be sure that the battery is fully-charged condition.

TOOL 09900-25008: Pocket tester

Tester knob indication: Voltage

DATA Charging output

Standard: 14.6-15.4V at 5 000 r/min



GENERATOR NO-LOAD PERFORMANCE INSPECTION

- Disconnect the generator coupler. (Refer to page 6-4)
- Start engine and keep it running at 5,000 rpm.
- Measure voltage between generator terminal and ground by using the pocket tester. If the reading is below standard values, replace with a new generator coil. (Refer to page 3-35)

⚠ CAUTION

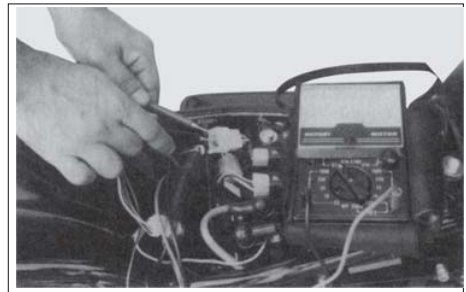
It is not necessary to remove the engine from the chassis during the removal the generator coil.

TOOL 09900-25008: Pocket tester

Tester knob indication: Voltage

DATA Generator no-load performance:

75.5-80V/5000 r/min
(When engine is cold)



Regulator/rectifier inspection

- If the resistance checked is incorrect, replace the regulator/rectifier.

