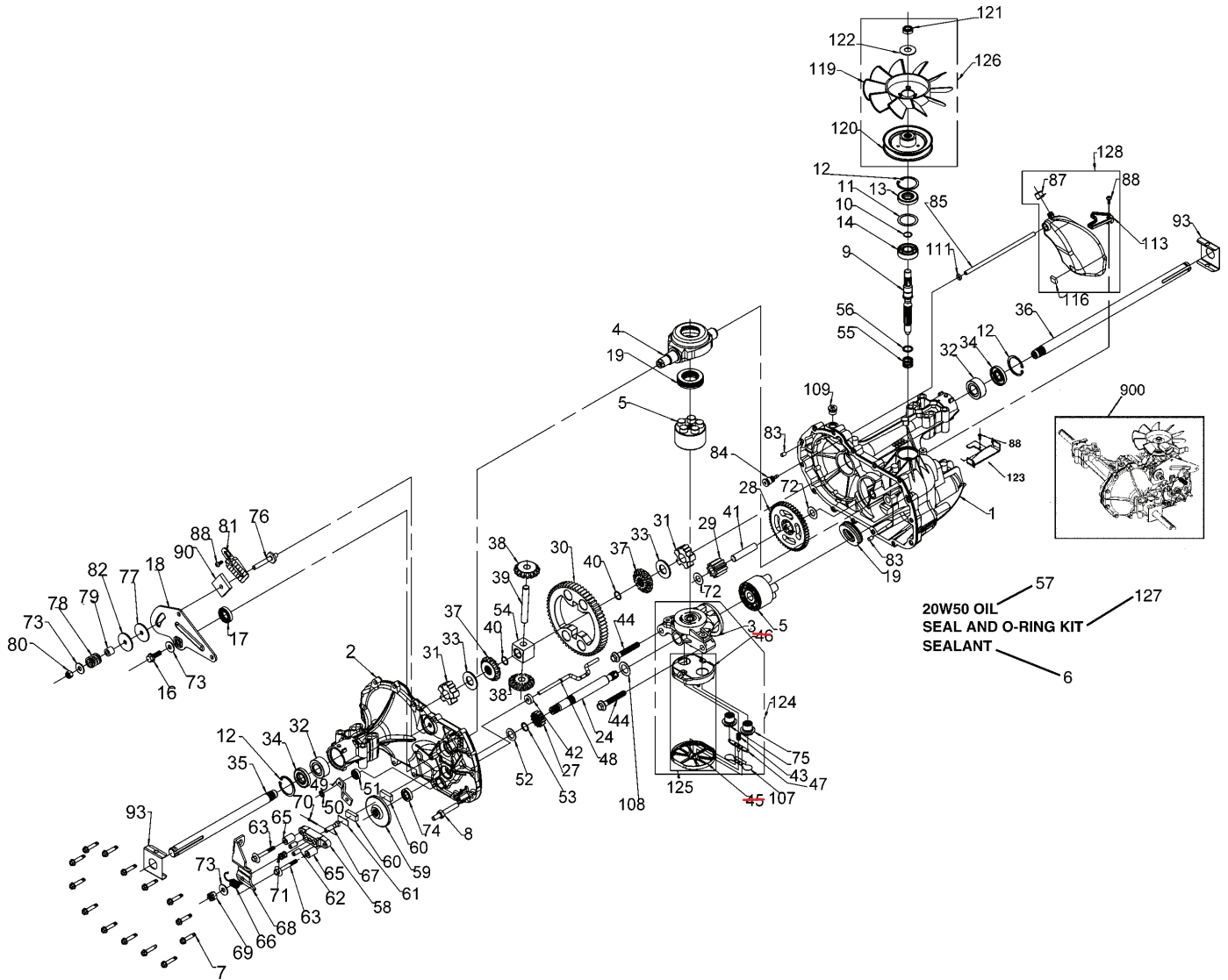


HYDRO-GEAR TRANSAXLE - - MODEL NUMBER 321-0510



HYDRO-GEAR TRANSAXLE - - MODEL NUMBER 321-0510

KEY PART NO. NO.	DESCRIPTION	KEY PART NO. NO.	DESCRIPTION
1	532 17 03-51	60	532 14 28-83
2	532 17 03-52	61	532 14 28-82
3	532 17 03-53	62	532 14 28-87
4	532 17 03-54	63	532 17 04-10
5	532 16 98-98		
6	532 17 03-55	64	532 14 28-92
7	532 17 03-56	65	532 17 04-11
8	532 17 03-57	66	532 17 04-12
9	532 17 03-58	67	532 17 04-13
10	532 17 03-59	68	532 17 81-57
11	532 17 03-60	69	532 17 04-15
12	532 16 98-70	70	532 17 04-16
13	532 17 03-61	71	532 17 04-17
14	532 17 31-58	72	532 17 04-18
16	532 17 03-62	73	532 14 28-84
		74	532 17 04-19
17	532 17 03-63	75	532 17 04-20
18	532 17 03-64	76	532 17 04-21
19	532 17 31-59	77	532 17 04-22
23	532 17 036-5	78	532 14 29-69
24	532 17 03-66	79	532 14 29-80
27	532 17 03-67	80	532 15 07-78
28	532 17 03-68		
29	532 17 03-69	81	532 17 04-23
30	532 17 03-70	82	532 17 04-24
31	532 17 03-71		
32	532 17 03-89	83	532 16 11-68
		84	532 17 04-25
33	532 14 299-1	85	532 17 04-26
34	532 17 03-90	87	532 17 31-60
35	532 17 03-91	88	532 17 04-29
36	532 17 03-92	90	532 17 04-30
37	532 15 07-92	93	532 17 04-31
38	532 15 07-93	107	532 17 04-32
39	532 15 08-09	108	532 17 04-33
40	532 17 03-93		
41	532 17 03-94	109	532 17 04-34
42	532 17 03-95	111	532 17 04-35
43	532 17 03-96	113	532 17 04-37
44	532 15 07-97	116	532 17 04-38
45	532 17 03-97	119	532 17 04-39
46	532 17 03-98	120	532 17 81-59
47	532 17 03-99	121	532 17 04-41
48	532 17 04-00	122	532 17 04-42
49	532 17 81-56	123	532 17 81-60
50	532 17 04-02	124	532 17 04-44
51	532 17 04-03	125	532 17 04-45
52	532 17 04-04	126	532 17 84-17
53	532 17 04-05	127	532 17 04-47
54	532 17 04-06	128	532 17 31-65
55	532 14 29-77	900	532 17 16-13
56	532 14 29-78		
57	532 15 07-98		
58	532 17 04-07		
59	532 17 04-08		

Correction: 532 17 00-61

NOTE: All component dimensions given in U.S. inches 1 inch = 25.4 mm

Key No.

45 and 46 replaced by Key no. 125, Filter Assembly 532 17 04-45