

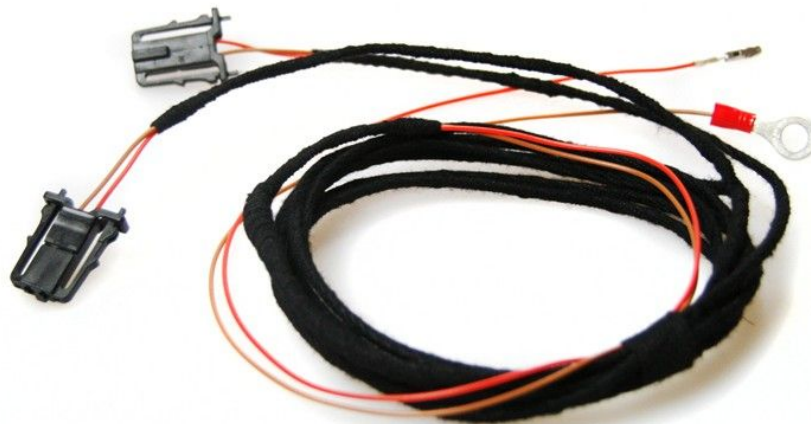
Version 1.01

(14.02.2014)

Installation Instruction

Foot-Well-Illumination Retrofit

Article. 39968
39969
40121



Golf 7

Content

Copyright.....	1
Disclaimer	2
General Advice.....	3
Safety Instructions.....	4
References Of Legal Regulations For Operation	4
Hints.....	5
Scope Of Delivery For 39968	5
Scope Of Delivery For 39969	5
Installation Instructions	6
Coding.....	8

Copyright

Our installation- and operation manuals, installation plans and other documentations in text or picture form are protected by copyrights.
Publication and distribution of these documentations via print or online media is only granted with written consent of Kufatec GmbH & Co.KG.

Disclaimer

Dear Customer,
our cable harnesses are developed with the help of the circuit diagrams and wiring schemes of the particular vehicle producer and they are tested and adjusted to the original vehicle, before the serial production. Therefore the integration into the On-Board electric- and electronic-system follows the information of the vehicle producers. Our installation instructions are consistent, in course of the necessary pre-understanding and the precision of the presentation in text and picture, with the staff usual in vehicle electrics/electronics and they have proven their value already hundredfold in practice.

If, during the installation of our products, difficulties occur, we are any time ready to provide you support by phone or E-mail. Additionally, we offer you to use the installation in our workshop in Bad Segeberg.

Costs, arising from third parties assigned with the installation of our products, bears the customer. Only when it proves, that there is a failure of our product, we will compensate the evidenced costs of the assembly and the costs of dismantling the defective product. Whereby we limit the cost reimbursement up to 110 Euro gross and we reserve our right to check the claimed defect in our workshop in Bad Segeberg. The costs for shipping will be refunded, in case of a justified claim.

We made the experience that each professional workshop, which is equipped with a necessary diagnosis device, diagnosis software and the circuit diagrams of the producer, can find the possible defects in our products within a short period of time. The assembly and disassembly, including failure diagnosis, can take place in a maximum of 60 minutes.

We also made the experience that many workshops are not able to cope with the product's circuit diagrams and can not read common wiring schemes. For simplest installation labors, several hours are calculated. You will understand, that we can neither take the risk that you find a reliable workshop, nor do we finance the training of the workers in the workshop of your confidence.

The costs, that arise from the acquisition of missing parts or replacements for defective parts from another supplier, we do reimburse to the amount of costs which would have arisen in case of subsequent delivery (saved expenditure). In this case, according to the legal warranty law, there would be no reimbursement right of any kind. As long as no deadline was set for the supplementary performance or deadline for supplementary performance has not expired.

If you have any problems during the installation or operation of our products call us, write us an E-mail, send us the product or come to our workshop in Bad Segeberg with your vehicle. We are sure, to find solutions for concerns of any kind.

Kind regards

Your Kufatec GmbH & Co. KG Team

General Advice

While developing this product, your personal safety combined with the best operating service, modern design and an up-to-date production technique was especially taken into account.

Unfortunately, despite the utmost care injuries and/or damages might occur due to improper installation and/or use.

Please, read the attached instruction manual completely with great care and keep it!

All articles of our production line pass through a 100 % check – for your safety and security.

We reserve the right to carry out technical changes which serve the improvement at any time.

According to each article and purpose, it is sometimes necessary to check each country's legal regulations before installing and starting it.

In case of guarantee claims, the article has to be sent back to the seller in the original packaging with the attached bill of purchase and detailed defect's description. Please, pay attention to the manufacturers return requirements (RMA). The legal warranty directions are valid.

The guarantee claim as well as the operating permission becomes invalid due to:

- a) unauthorized changes to the device or accessories which have not been approved or carried out by the manufacturer or its partners*
- b) opening the device's frame*
- c) device's repairs carried out by one's own*
- d) improper use/operation*
- e) brute force to the device (drop, willful damage, accident etc.)*

During installation, please pay attention to all safety relevant and legal directions. The device has only to be installed by trained personnel or similarly qualified people.

Limit the time, in case of installation- or problems concerning the functionality of the device to approx 0,5 hours for mechanical or 1,0 hours for electrical error searches.

To avoid unnecessary costs and time-loss, send in an immediate support-request, via the Kufatec-contact-form (<http://www.kufatec.de/shop/de/infocenter/>) to our support team.

In case of, let us know the following:

- Vehicle-Identification-Number
- Five digit part number of the device
- Precise error report
- Steps you have taken to solve the problem

Safety Instructions

Installation requires special knowledge.

Do not install the device yourself. For safe and reliable installation, consult a specialist.

- *Never use bolts or nuts from the car's safety devices for installation. If bolts or nuts from the steering wheel, brakes or other safety devices are used for installation of the device, it may cause an accident.*
- *Use the device with a DC 12V negative ground car. This device cannot be used in large trucks which use a DC 24V battery. If it is used with a DC 24V battery, it may cause a fire or accident.*
- *Avoid installing the device in the following places: - Where it would hinder your safe driving. – Where it could damage the car's fittings.*
- *This device is only for use in the above mentioned vehicles. Only connections described within this instructions guide are allowed or required to use for installation.*
- *For damage impact caused by faulty installation, unsuitable connections, inappropriate vehicles Kufatec GmbH assumes no liability.*
- *We advise you that these devices process data from the MOST – protocol of the vehicle. As the supplier of this device we don't know the overall system you are working with. If your device causes damage, due to other changes made to the vehicle, Kufatec GmbH assumes no liability.*
- *Kufatec GmbH supplier does not guarantee the use of the product for changes within a new vehicle series.*
- *If the car manufacturers don't agree with the installation of our device by reason of warranty, Kufatec GmbH assumes no liability. Please, check conditions and warranty before you begin the installation.*
- *Kufatec GmbH supplier reserves the right to change the device specifications without notice.*
- **Note: The road traffic has to have your full attention!**

Telephone operations should only be done in suitable traffic and weather situations. The volume needs to be set so you are still able to realize acoustic warning signals (Police, Fire Brigade)

Errors and changes excepted.

References Of Legal Regulations For Operation

Only use this device in the intended domain.

If you use it in a foreign domain, if the device is not installed properly, or if the device will be reconstructed, the guarantee will expire.

Hints

HINT: Disconnect the battery, before you start the installation.

Scope Of Delivery For 39968

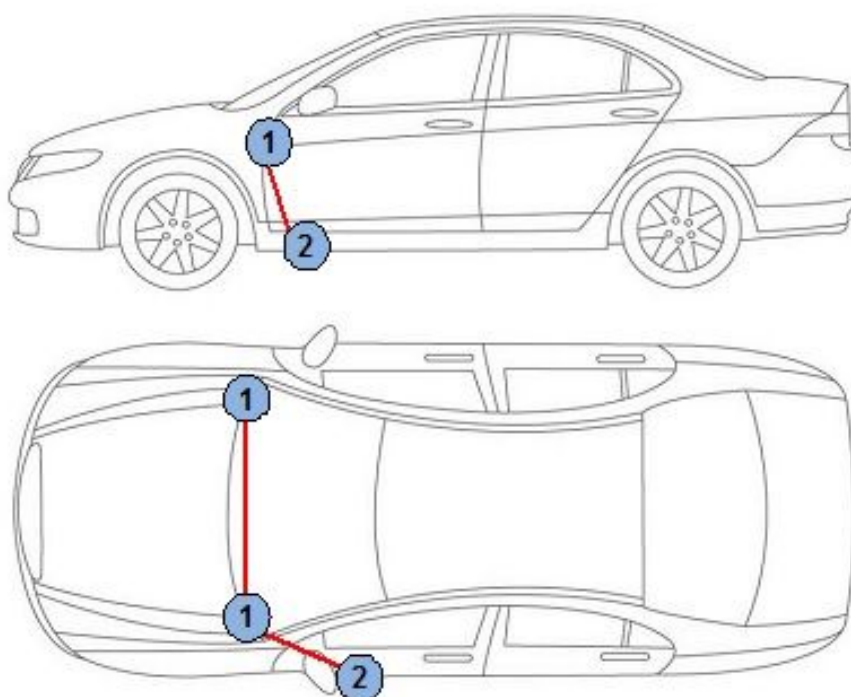
- Harness

Scope Of Delivery For 39969, 40121

- Harness
- 2 x original LED-Lamps

Installation Instructions

The following scheme shows how to lay the wires, as well as the locations of the single components.



Scheme

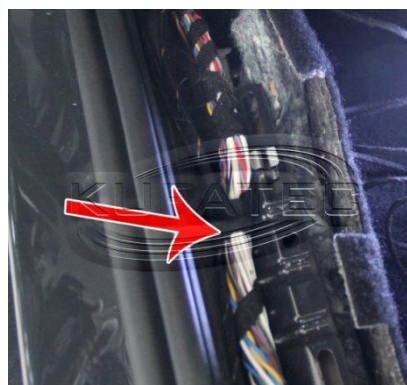
1 – Led-lamps, left and right

2 – Ground connector

Remove all plastic covers inside the driver's foot well. (pic.1-2)

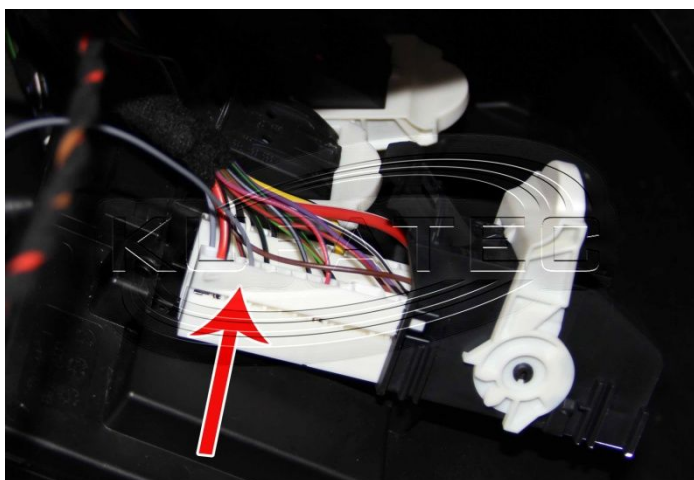


pic. 1

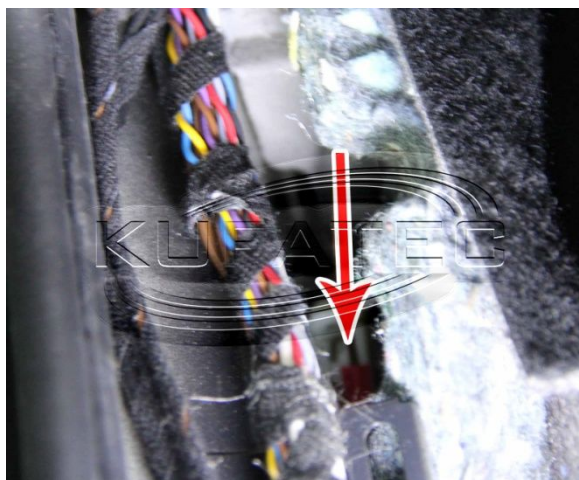


pic. 2

The BCM is located underneath the steering wheel. Do pin-in the red wire (see wire imprint) into the first plug. Position C Pin 72. (pic.3) Now connect the brown wire, which is located in the baseboard, to the ground-connector. (pic.4)



pic. 3

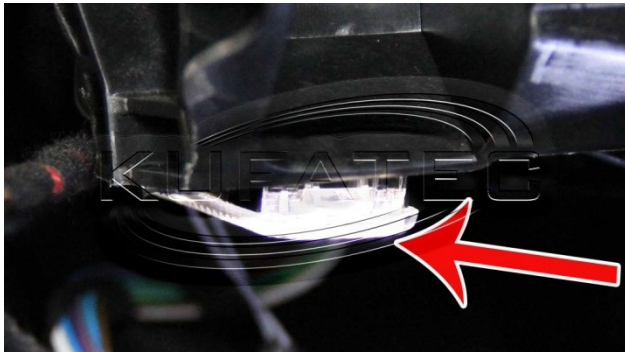


pic. 4

Now install the Led-lamps. In order to do so, install them in these locations:

- underneath the dashboard, driver's side. (pic.5)
- passenger side, close to the glove compartment. (pic.6)

The Led-lamps have to click-in, to be properly installed.



pic. 5



pic. 6

HINT: Should the Led-lamps not properly click-in, adjust the thickness of the plastic, carefully with a tool of your choice.

Do plug in the shorter wire into the Led-lamp on the driver's side and guide to other wire alongside already existing lines, behind the radio slot towards the glove compartment. Now connect the second Led-lamp.

Now execute extensive tests. If the tests are successful reassemble the vehicle.

Coding

You can only use our coding-dongle, article-number 40076 to activate the new function.