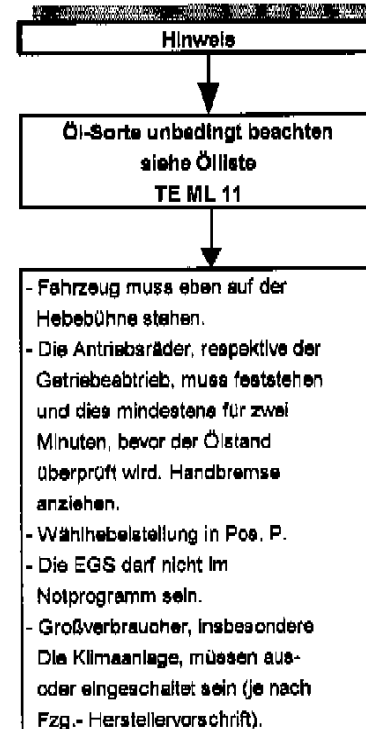
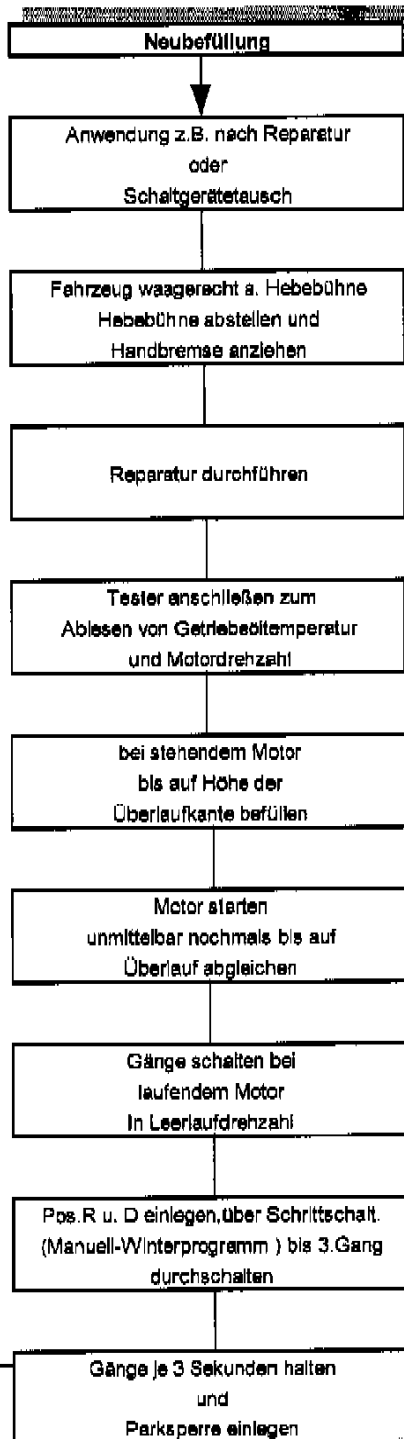
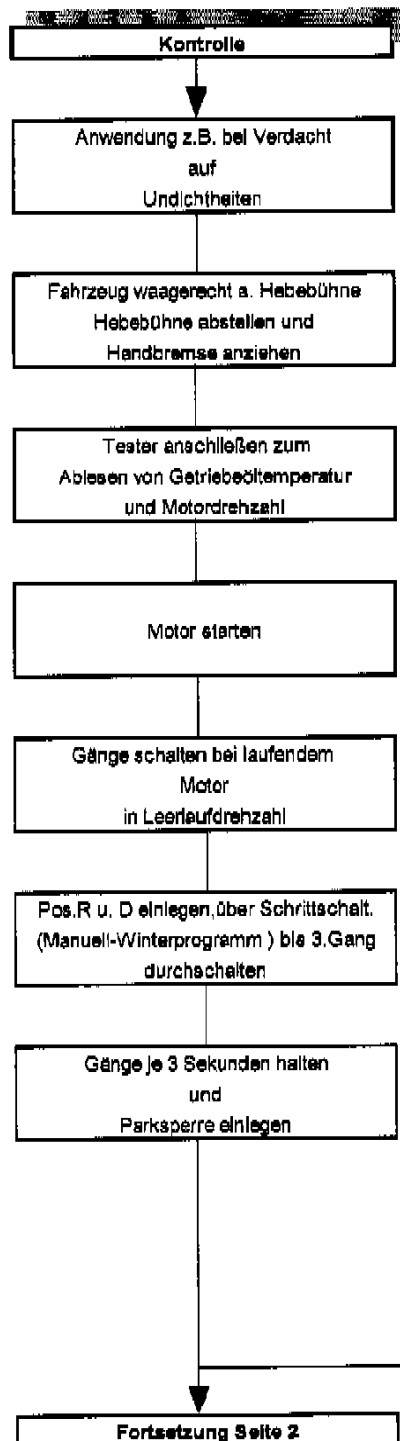
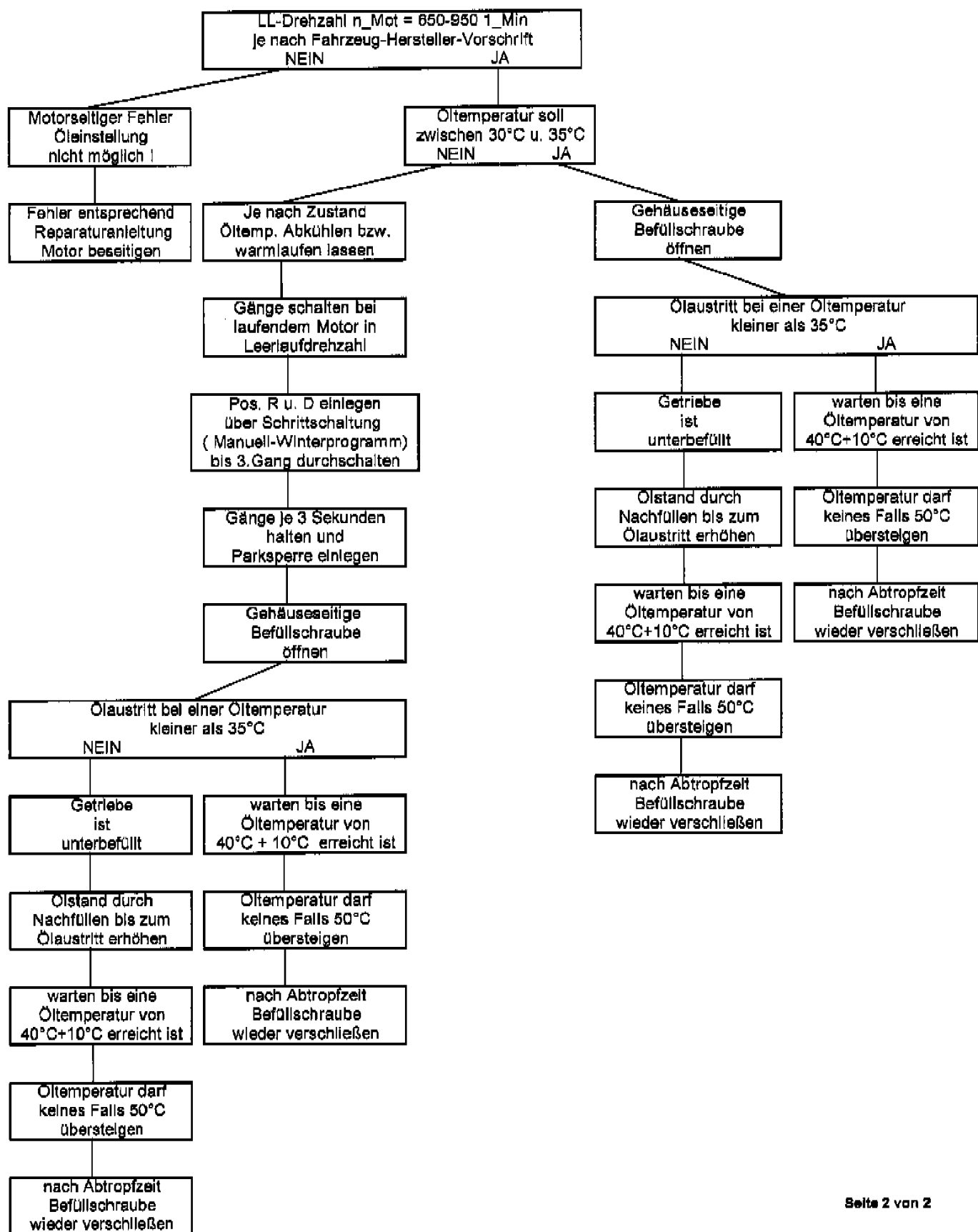
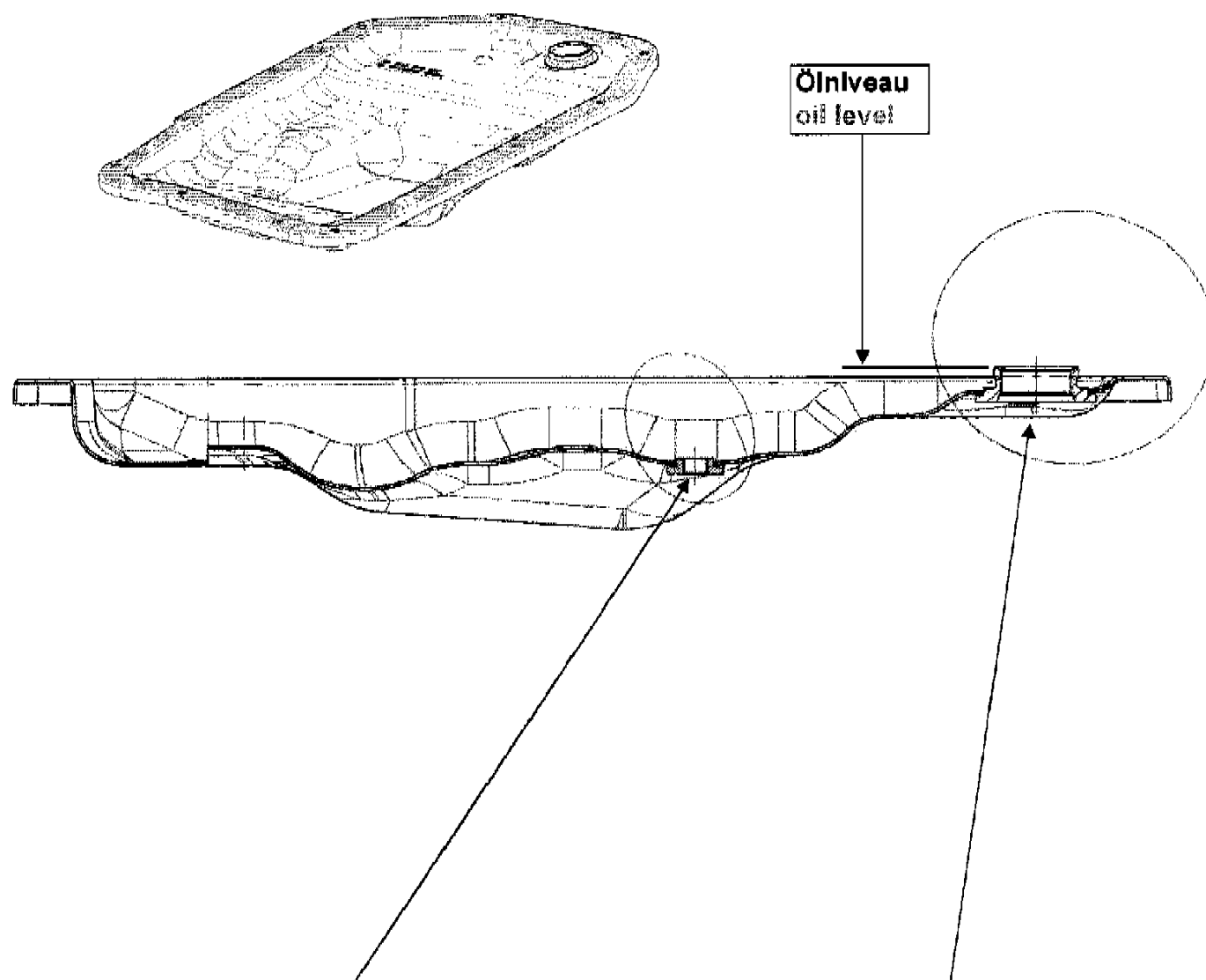


# **Ölbefüllung Automatikgetriebe 6HP19 allgemein bei 40°C auf Überlauf**





# **Ölservice 6HP19x Audi** **Oil service 6HP19x Audi**



<b>Ölablass-Schraube</b>	<b>M10x1</b>
Oil drain plug	
<b>Innensechskant</b>	<b>5 mm</b>
Internal hexagon	
<b>Anziehdrehmoment</b>	<b>12 Nm ± 1,2 Nm</b>
Tightening torque	

<b>Öleinfüll-Schraube und Ölstands-Kontrolle</b>	<b>M30x1,5</b>
Oil filler screw and oil level screw	
<b>Innensechskant</b>	<b>17mm</b>
Internal hexagon	
<b>Anziehdrehmoment</b>	<b>80 Nm ± 8 Nm</b>
Tightening torque	