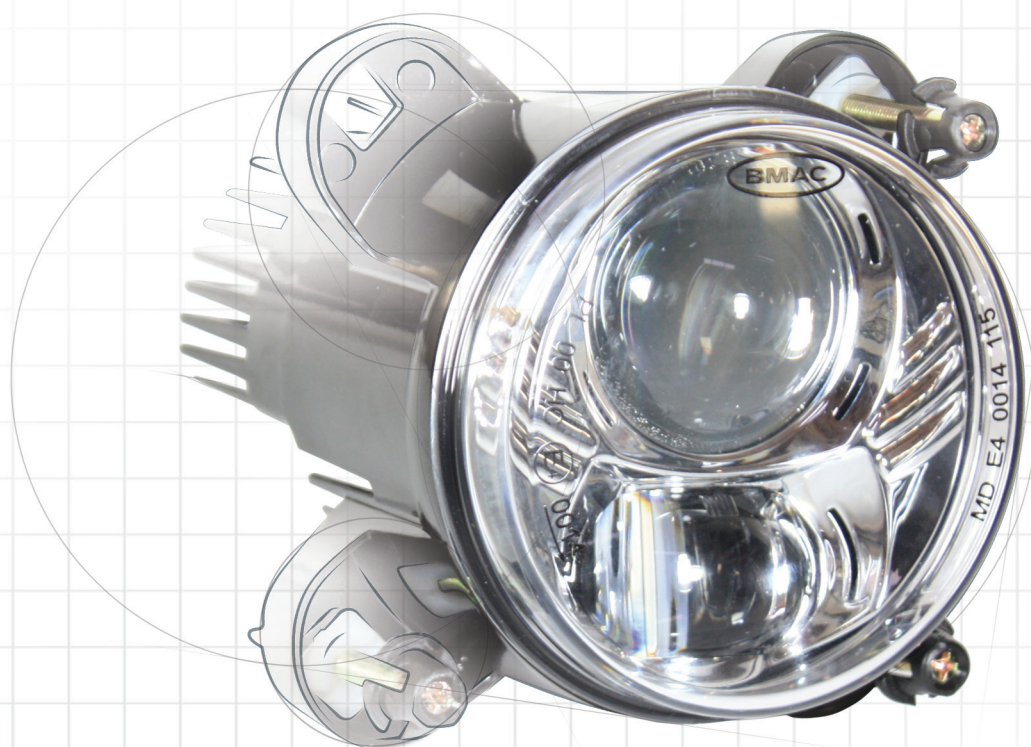




Introducing *Duo-Lux*

Europe's First E Approved LED
90mm Light Units

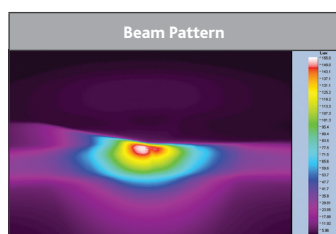
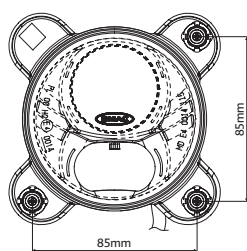
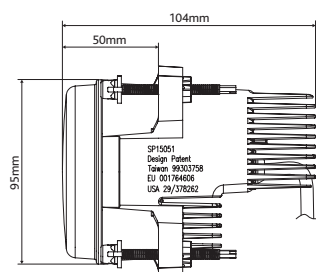


- Unique *Duo-Lux* LED & lens configuration creates a precise beam pattern with exact cut off and optimum road illumination
- Typical useful life of up to 10 years (based on an average use of eight hours a day)
- High intensity light output features low glare & higher LED colour temperature of 5600K
- Patented & Registered Design
- Clear & crisp light with more visible light and better reflection from road signs
- Low power consumption, 1/3 that of the halogen equivalent
- Light weight & durable die cast aluminium body & impact resistant polycarbonate lens
- Universal 90mm modular design
- Dual voltage 12-24v



Duo-Lux Low beam headlight

Lamp Dimensions



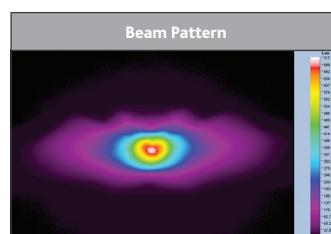
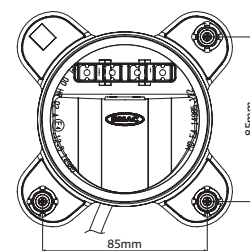
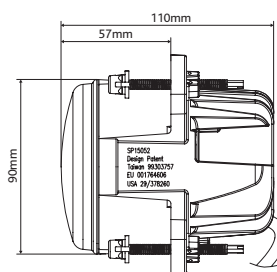
Patent:
Taiwan: 99222999
EU: 11155618.9
USA: 13/029542

Registered Design
Taiwan: 99303758
EU: 001764606
USA: 29/378262



Duo-Lux High beam headlight with integral 4 LED position light

Lamp Dimensions



Patent:
Taiwan: 99303757
EU: 001764606
USA: 29/378260

Headlamp System Part No.	Function	RHT	LHT	Light Source	E approval No.	Pack Qty's
115	Low Beam	-	✓	2 x LED	E4-112R-00 0013	1
116	Low Beam	✓	-	2 x LED	E4-112R-00 0013	1
122	High Beam	✓	✓	1 x LED	E4-112R-00 14985 / E4-7R-02 14985	1

Electrical Specification					
	Operating Voltage	Power Consumption	Watts	Approx Service Life	LED Colour Temperature
Low Beam	12/24VDC	0.96amps @ 24v	23w	Up to 10 years*	5600K
High Beam	12/24VDC	0.75amps @ 24v	18w	Up to 10 years*	5600K

Material Specification					
	Housing	Finish	IP Rating	System Weight	Fixing Type
Low Beam	Aluminium	Powder coated	IP67	0.75g	Std 3 point adjustment
High Beam	Aluminium	Powder coated	IP67	0.74g	Std 3 point adjustment

Parts List			
Model	90mm module & adjusters	LED driver	Adjusters pack
115	115/1	115/2	115/3
116	116/1	115/2	115/3
122	122/1	115/2	115/3

*Based on an average use of 8 hours per day

BMAC Limited

Units 13 + 14 Shepley Industrial, Estate South, Shepley Road, Audenshaw M34 5DW

☎ +44(0)161 337 3070 ☎ +44(0)161 336 5691 ✉ enquiries@bmac.ltd.uk 🌐 www.bmac.ltd.uk

Duo-Lux headlight units are a registered design
Duo-Lux is a registered trade mark
BMAC is part of the Ring Specialist Division
All measurements are nominal

