

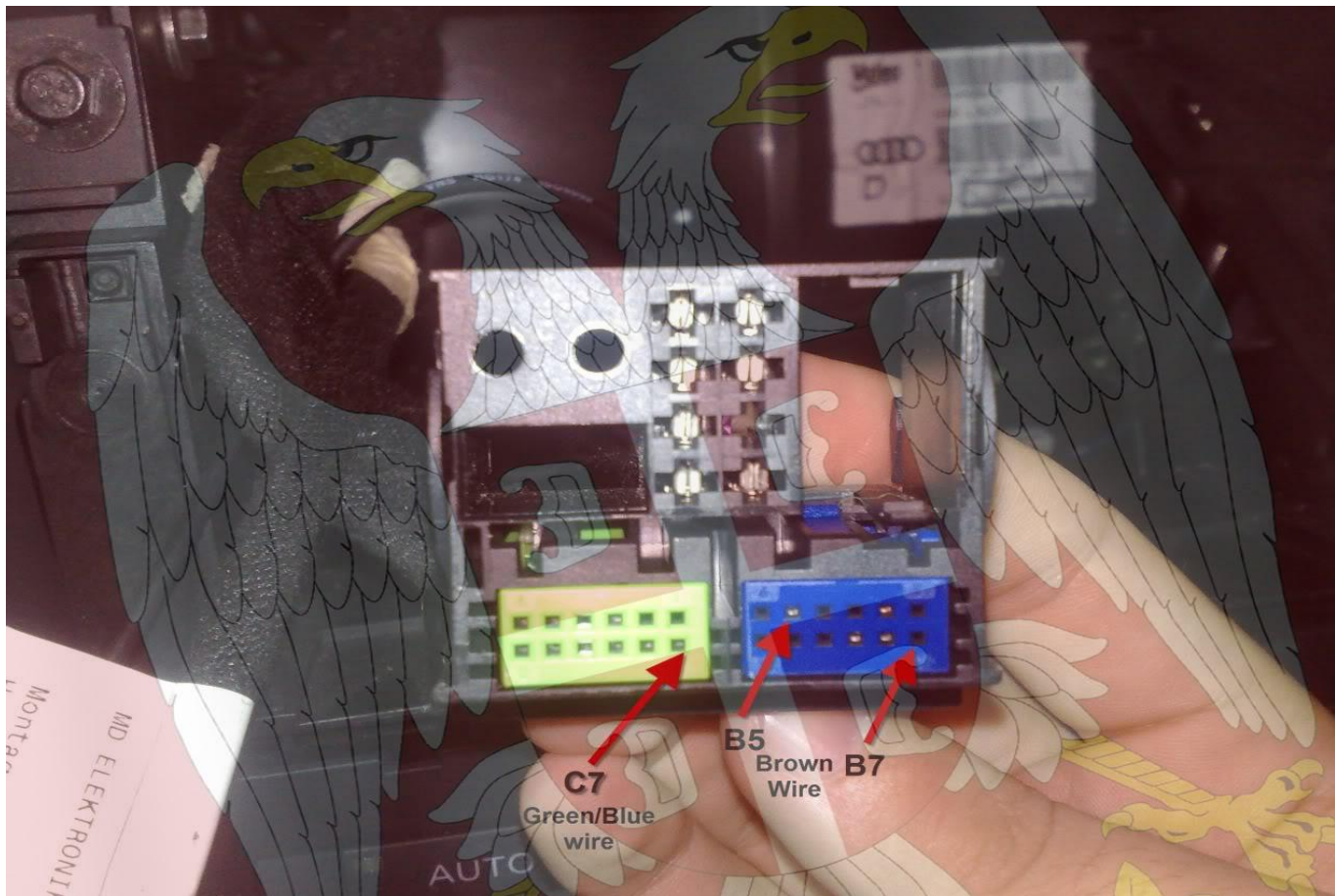
All symphony II+ radios work communicate through the K-line and not CAN so I just wanted to make sure that everybody knows that. You have to move the K-Line cable so you can talk to RNS-e with vag com and code it properly. Also if you have Bose (which I do) you have to move additional (Bose) wire.

In my case since I have the Bose I moved the wires in the following way:

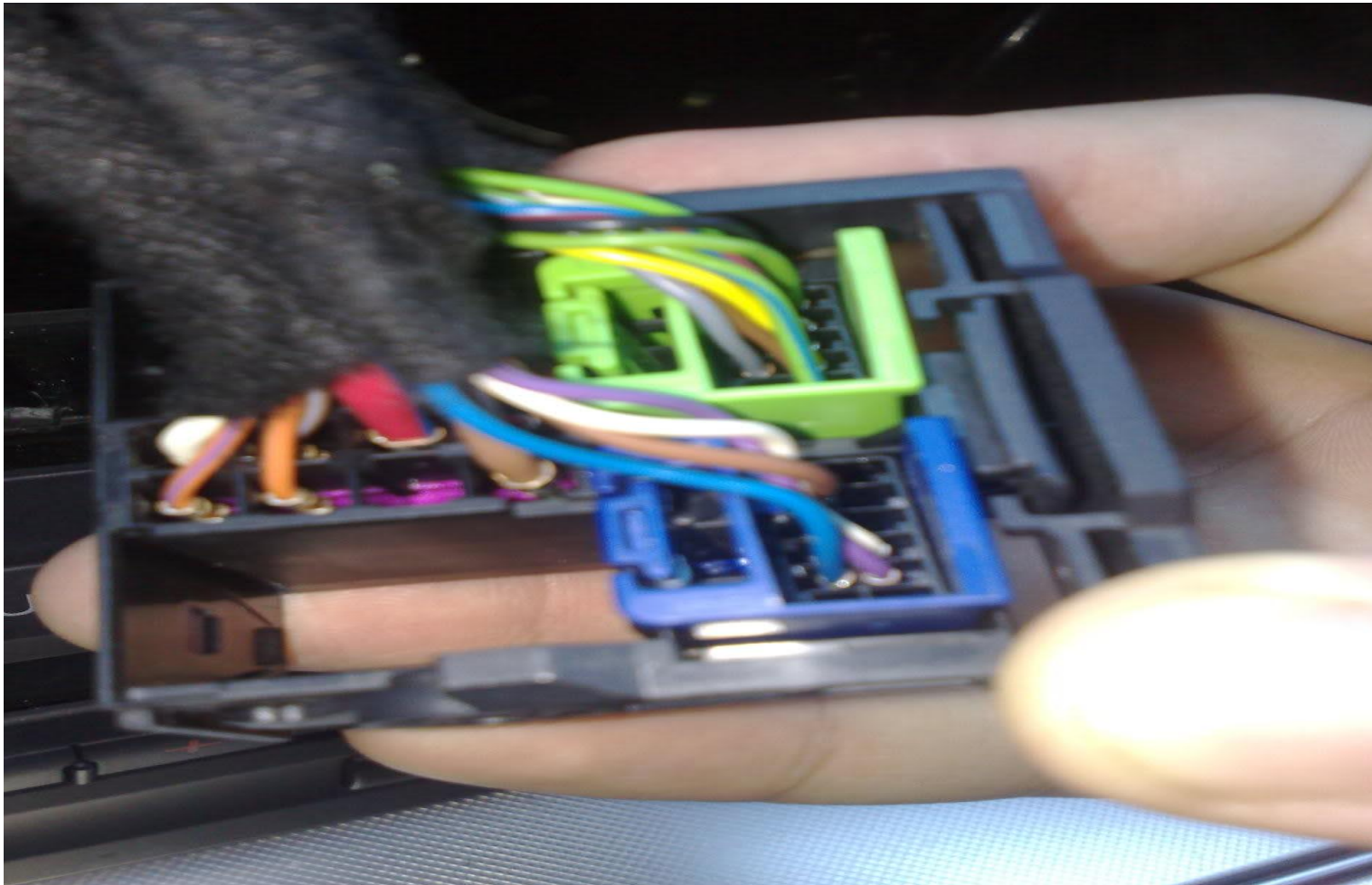
B5 to B7 (Bose wire) so that way you free up the cable for K-Line and then you move C7 to B5. (If you don't have the Bose then you don't have to worry about the first part because B5 will be open so you just need to move the C7 wire to B5).

To identify the wires so you know which one is which look at the attached picture (This took me a while to figure out since it is confusing as which wire is which since you can look at the connector in two ways.)

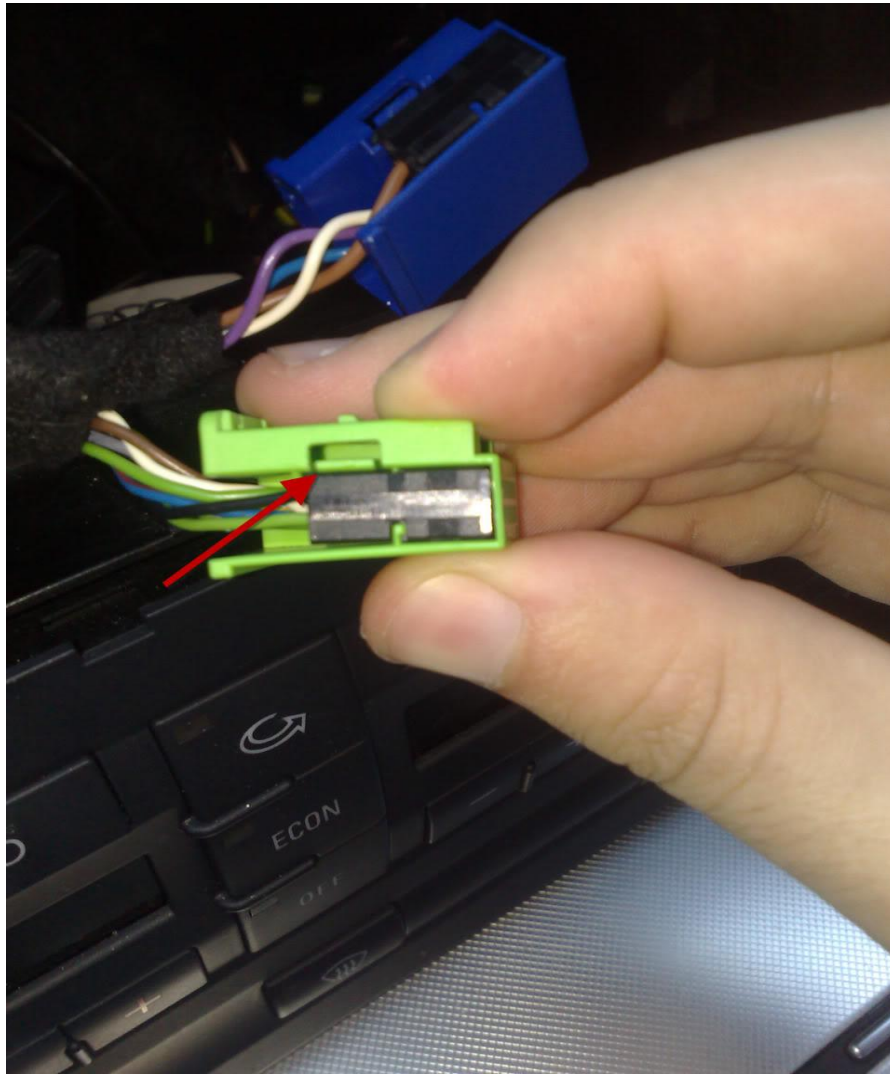
This is if you are looking at the connector the same way it plugs into the RNS-e:



To swap the wires take the green and blue connectors out of the housing (just unclip them and pull them out, make sure that the locking clip is down in locked position so you can pull out the connectors straight out, see the picture below)



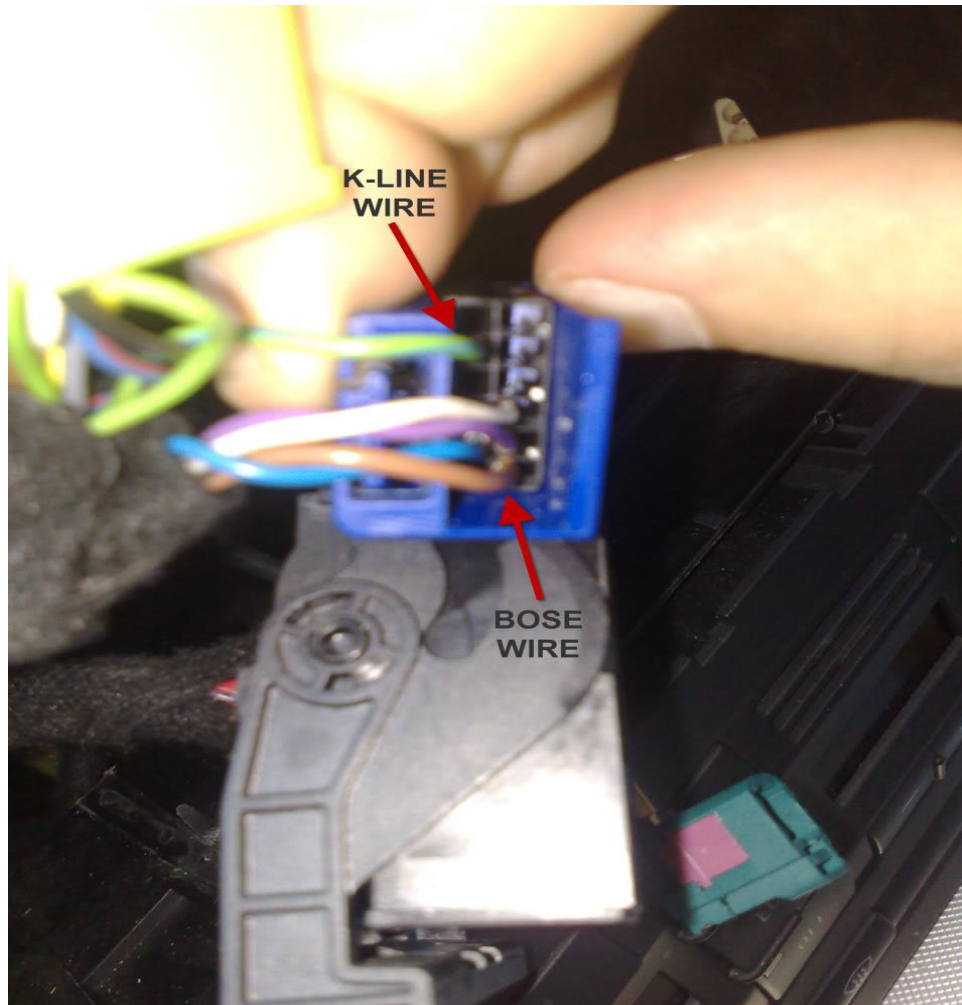
Once when the connectors are out of the housing you will also have to take off the blue and green covers off, stick small flat head screwdriver or you can just do it with your hand and then pull out the little harness out of the housing. (Make sure you don't forget the way the housing is in because if you flip it then the cables that you need to swap won't be there and it will just confuse you more)



To swap the wires take a small flathead screwdriver and insert it on the top of the small wire as shown in the picture, don't push too hard so you don't damage the wire and slide it out again slowly as much as your screwdriver can move there and then pull on the wire, if it doesn't come out easily it means that you still didn't unlock it so go back and stick the screwdriver in again and if it does come out then, well you got it! See the picture below.



Once when you swapped all the wires just put everything back the way it was and plug your GPS and regular antenna as well as the big connector. Slide the RNS-e in and you are done with hardware stuff. This is how blue connector looks like after you moved the wires.



Now if you have Bluetooth then you need to code the RNS-e for it, also you can add navigation info to the DIS, to do that you need to vagcom to do it.

To code the RNS-e for bluetooth Go to Navigation-37 and then to Coding-07

Comm Status
IC=1 TE=0 RE=0
Protocol: KWP2000

VCDS

Open Controller

Controller Info

VAG Number: 8E0 035 192 Q

Component: RNS-E US H73 0260

Soft. Coding: 0309632

Shop #: Imp: 000 WSC 00000

Extra:

Extra: Geraet 00000

Basic Functions

These are "Safe"

Fault Codes - 02

Readiness - 15

Meas. Blocks - 08

Advanced ID - 1A

Supp. Codes - 18

Adv. Meas. Values

Advanced Functions

Refer to Service Manual!

Coding II - 11

Coding - 07

Basic Settings - 04

Adaptation - 10

Output Tests - 03

Security Access - 16

Close Controller, Go Back - 06

On this screen the one that you care about is 0xxx?xx, change this to 6 (the same that I have in software coding), if you have XM then change 0xxxx?x to 3 and that's it.

Comm Status

IC=1 TE=0 RE=0

Protocol: KWP2000 \

VCDS

Open Controller

Controller Info

VAG Number:

8P0 862 335 J

Component:

FSE_255x BT H25 0290

Soft. Coding:

0011677

Shop #:

Imp: 000 WSC 06325

Extra:

Extra:

Geraet 00000

Basic Functions

These are "Safe"

Fault Codes - 02

Readiness - 15

Meas. Blocks - 08

Advanced ID - 1A

Supp. Codes - 18

Adv. Meas. Values

Advanced Functions

Refer to Service Manual!

Coding II - 11

Coding - 07

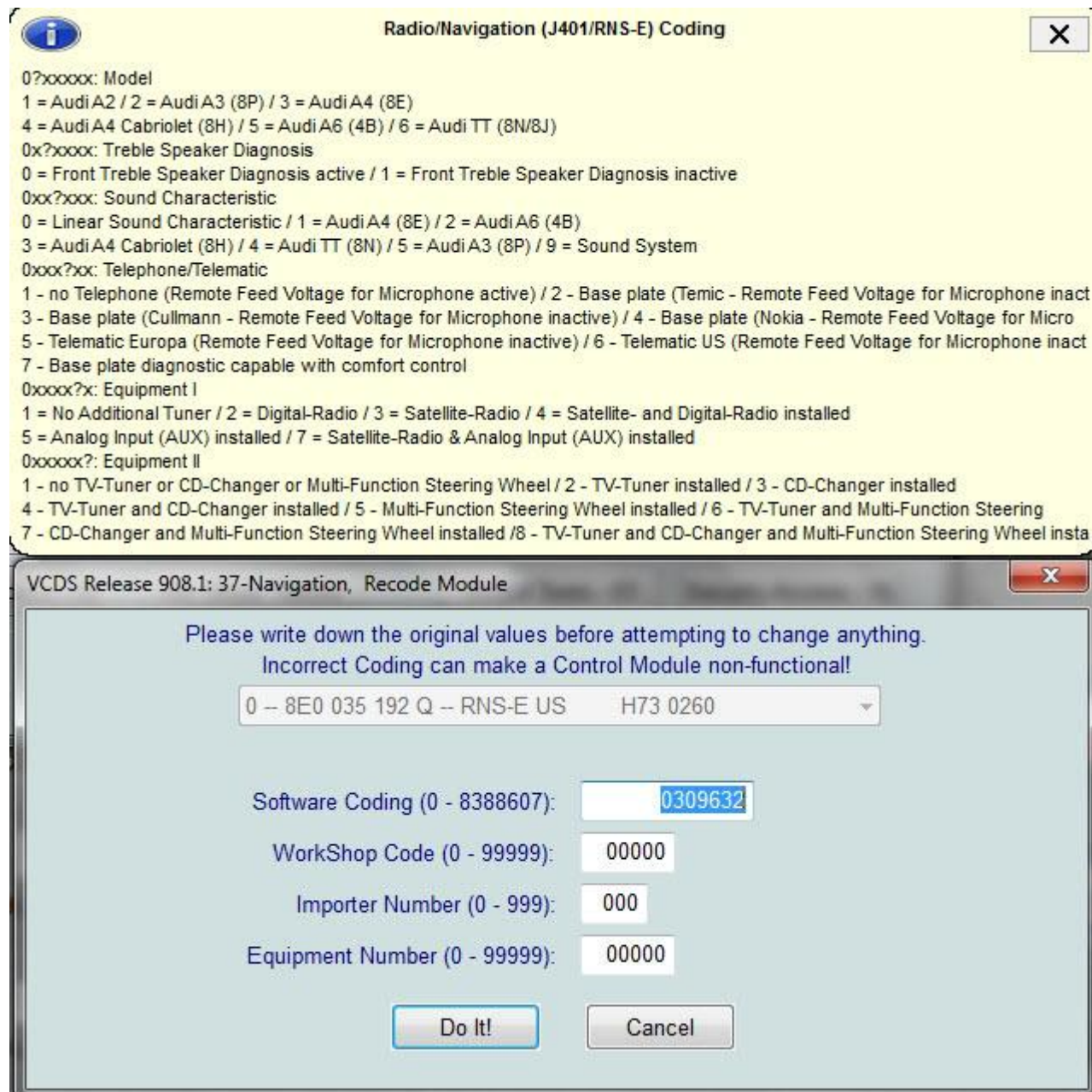
Basic Settings - 04

Adaptation - 10

Output Tests - 03

Security Access - 16

Close Controller, Go Back - 06

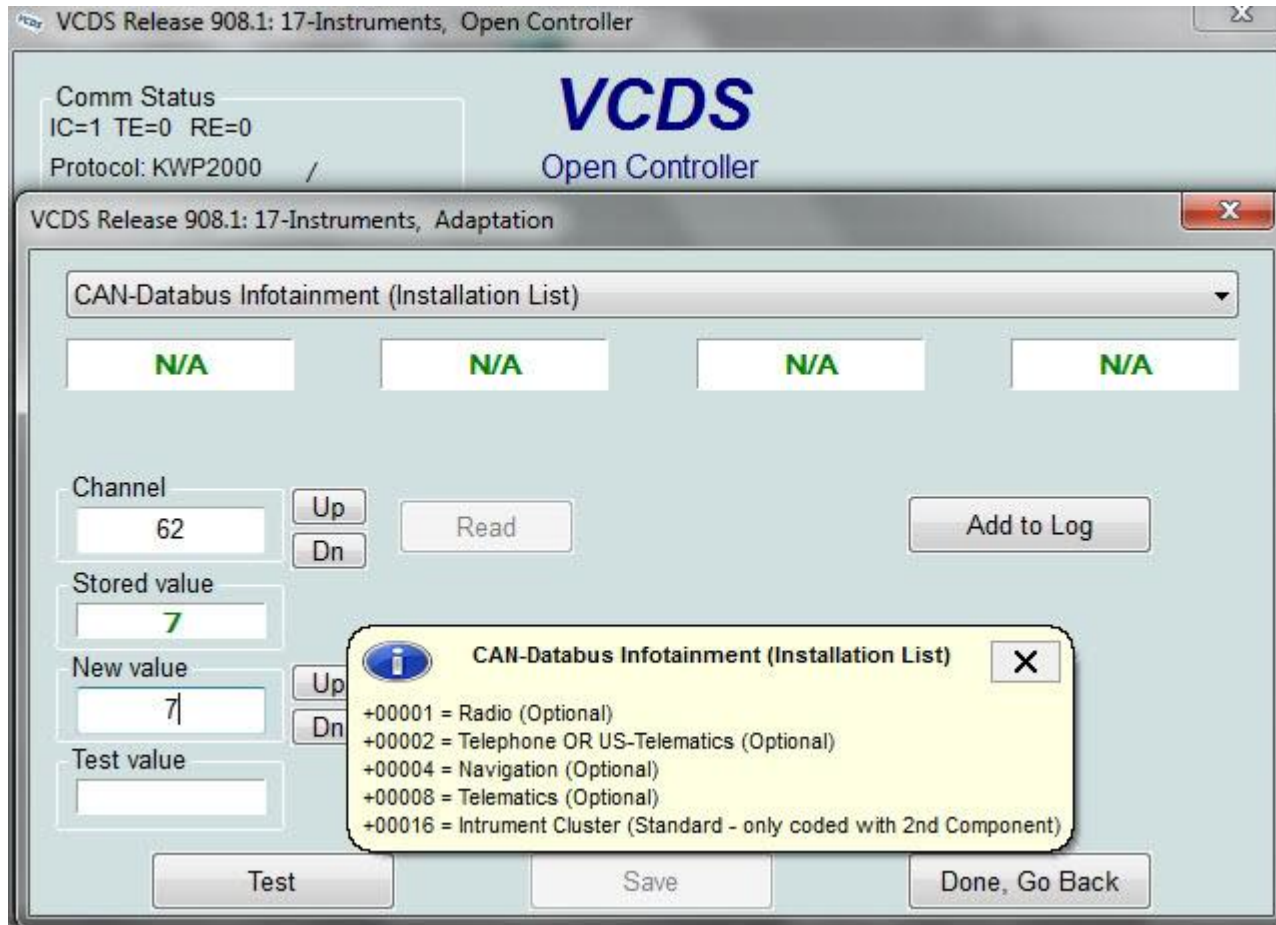


To code the phone module for RNS-e go to Telephone-77, and then Coding-07

On here change 00?xxxx to 1, you can change last two numbers if you have North American bluetooth module.

To code you display for nav so you can see directions in the instrument do the following:

Go to Instruments-17 and then to Adaptation-10 and you will get to the following screen



To whatever number you have in stored value add 4 to that in the new value field and click on test and save and that's it.